

Morris County Unemployment 2006 through 2008

	2006		2007		2008	
	Persons	Rate (%)	Persons	Rate (%)	Persons	Rate (%)
January	9,900	3.6	9,100	3.3	9,900	3.6
February	10,200	3.7	8,700	3.2	10,600	3.9
March	9,700	3.5	8,400	3.1	10,200	3.7
April	9,300	3.4	7,800	2.9	9,500	3.5
May	9,300	3.4	7,800	2.9	10,600	3.9
June	9,800	3.5	8,500	3.1	10,900	4.0
July	10,800	3.9	9,600	3.5	12,000	4.3
August	9,300	3.4	8,200	3.0	11,800	4.3
September	8,700	3.2	8,100	3.0	11,300	4.1
October	7,600	2.8	7,400	2.7	11,400	4.1
November	7,900	2.9	7,600	2.8	11,700	4.2
December	7,200	2.6	7,700	2.8	13,800	5.0

SOURCE: N.J. Department of Labor and Workforce Development

NOTE: Not Seasonally Adjusted

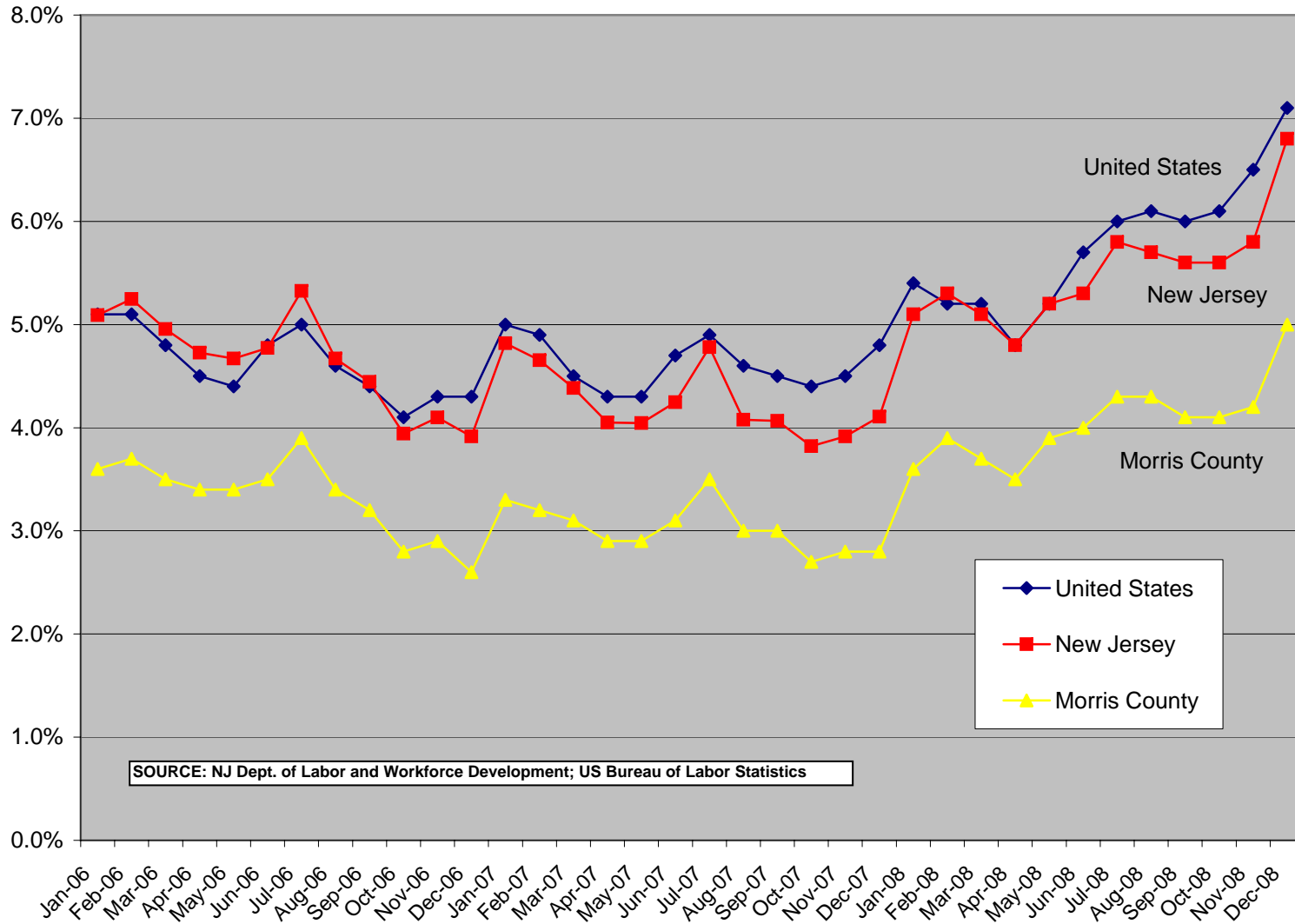
New Jersey Unemployment 2006 through 2008

	2006		2007		2008	
	Persons	Rate (%)	Persons	Rate (%)	Persons	Rate (%)
January	226,400	5.1	214,900	4.8	228,100	5.1
February	234,400	5.2	207,400	4.7	238,200	5.3
March	221,700	5.0	195,600	4.4	230,800	5.1
April	211,400	4.7	179,700	4.0	213,400	4.8
May	209,200	4.7	179,700	4.0	235,500	5.2
June	216,600	4.8	191,300	4.2	241,000	5.3
July	243,100	5.3	216,400	4.8	268,000	5.8
August	211,600	4.7	182,500	4.1	262,100	5.7
September	198,400	4.4	180,600	4.1	251,900	5.6
October	176,700	3.9	169,900	3.8	256,000	5.6
November	184,200	4.1	175,100	3.9	261,000	5.8
December	176,100	3.9	183,500	4.1	308,100	6.8

SOURCE: N.J. Department of Labor and Workforce Development

NOTE: Not Seasonally Adjusted

Unemployment Rate: United States, New Jersey and Morris County, 2006 - 2008



Morris County Employment And Wages: 2006 Annual Private Sector Report

NAICS SECTOR	NAICS DESCRIPTION	Average Units	Employment				Wages		
			March	June	Sept	Dec	Average Annual	Average Weekly	Average Annual
11	Agriculture, forestry, fishing and hunting	
111	Crop production	30	244	330	326	268	293	\$587	\$30,522
112	Animal production
114	Fishing, hunting and trapping
115	Agriculture and forestry support activities
21	Mining	
212	Mining, except oil and gas
22	Utilities	
221	Utilities
23	Construction	1,943	11,675	13,295	13,409	13,209	12,848	\$1,124	\$58,450
236	Construction of buildings	599	2,446	2,615	2,697	2,649	2,600	\$1,036	\$53,861
237	Heavy and civil engineering construction	65	1,066	1,507	1,480	1,373	1,355	\$1,381	\$71,787
238	Specialty trade contractors	1,280	8,163	9,173	9,232	9,187	8,893	\$1,111	\$57,760
31-33	Manufacturing	668	26,915	26,818	26,905	27,073	26,871	\$1,566	\$81,424
311	Food manufacturing	38	548	552	570	578	560	\$680	\$35,349
312	Beverage and tobacco product manufacturing
313	Textile mills
314	Textile product mills	6	57	58	56	57	58	\$661	\$34,371
315	Apparel manufacturing	12	226	234	232	225	229	\$802	\$41,683
316	Leather and allied product manufacturing
321	Wood product manufacturing
322	Paper manufacturing	15	925	870	888	887	887	\$1,141	\$59,331
323	Printing and related support activities	95	1,857	1,820	1,817	1,812	1,825	\$1,005	\$52,235
324	Petroleum and coal products manufacturing
325	Chemical manufacturing	70	9,695	9,652	9,671	9,642	9,655	\$2,301	\$119,633
326	Plastics and rubber products manufacturing	26	854	812	809	788	825	\$848	\$44,119
327	Nonmetallic mineral product manufacturing	22	546	511	504	491	505	\$1,132	\$58,871
331	Primary metal manufacturing
332	Fabricated metal product manufacturing	104	2,395	2,449	2,463	2,513	2,442	\$1,012	\$52,642
333	Machinery manufacturing	63	1,482	1,447	1,473	1,451	1,466	\$1,227	\$63,781
334	Computer and electronic product manufacturing	78	3,109	3,099	3,094	3,068	3,091	\$1,502	\$78,106
335	Electrical equipment and appliance mfg.
336	Transportation equipment manufacturing
337	Furniture and related product manufacturing	40	438	456	451	452	442	\$1,130	\$58,750
339	Miscellaneous manufacturing	51	3,127	3,217	3,215	3,344	3,221	\$1,222	\$63,556
42	Wholesale Trade	1,277	19,656	19,509	18,618	18,698	19,145	\$1,680	\$87,357
423	Merchant wholesalers, durable goods	594	9,521	9,455	8,795	8,695	9,114	\$1,520	\$79,047
424	Merchant wholesalers, nondurable goods	244	7,910	7,856	7,626	7,721	7,799	\$1,917	\$99,687
425	Electronic markets and agents and brokers	438	2,225	2,198	2,197	2,282	2,232	\$1,504	\$78,207
44-45	Retail Trade	2,009	29,688	30,161	29,296	31,935	30,021	\$624	\$32,469
441	Motor vehicle and parts dealers	174	3,647	3,647	3,599	3,613	3,625	\$1,002	\$52,092
442	Furniture and home furnishings stores	140	1,624	1,636	1,572	1,804	1,635	\$697	\$36,266
443	Electronics and appliance stores	141	1,424	1,400	1,454	1,658	1,462	\$835	\$43,397
444	Building material and garden supply stores	162	2,820	3,094	2,853	2,879	2,913	\$684	\$35,551
445	Food and beverage stores	306	6,364	6,400	6,212	6,323	6,323	\$479	\$24,886
446	Health and personal care stores	162	2,253	2,315	2,195	2,313	2,265	\$681	\$35,417
447	Gasoline stations
448	Clothing and clothing accessories stores	236	2,516	2,556	2,419	2,975	2,569	\$344	\$17,863
451	Sporting goods, hobby, book and music stores	150	1,787	1,817	1,734	2,108	1,834	\$395	\$20,565
452	General merchandise stores	48	3,495	3,645	3,684	4,443	3,735	\$429	\$22,306
453	Miscellaneous store retailers	262	1,823	1,786	1,712	1,893	1,777	\$460	\$23,943
454	Nonstore retailers
48-49	Transportation and Warehousing	361	9,021	9,000	9,071	9,936	9,047	\$904	\$46,994
481	Air transportation	9	35	36	36	31	35	\$2,121	\$110,274
483	Water transportation
484	Truck transportation	146	1,566	1,686	1,657	1,641	1,630	\$865	\$44,997
485	Transit and ground passenger transportation	76	1,658	1,669	1,580	1,648	1,576	\$435	\$22,638
486	Pipeline transportation
487	Scenic and sightseeing transportation
488	Support activities for transportation	69	1,522	1,455	1,436	1,429	1,473	\$1,543	\$80,254
491	Postal service
492	Couriers and messengers
493	Warehousing and storage	19	1,107	1,101	1,094	1,385	1,151	\$1,044	\$54,297

Table continues on next page

Morris County Employment And Wages: 2006 Annual Private Sector Report (cont.)

NAICS SECTOR	NAICS DESCRIPTION	Average Units	Employment				Wages		
			March	June	Sept	Dec	Average Annual	Average Weekly	Average Annual
51	Information	323	9,791	10,179	10,068	9,806	9,956	\$1,633	\$84,902
511	Publishing industries, except Internet	77	2,043	2,031	2,070	2,092	2,055	\$1,415	\$73,560
512	Motion picture and sound recording industries	40	685	728	634	712	695	\$498	\$25,891
515	Broadcasting, except Internet
516	Internet publishing and broadcasting
517	Telecommunications	131	3,873	4,136	4,089	4,066	4,033	\$1,953	\$101,569
518	ISPs, search portals, and data processing
519	Other information services	15	191	212	201	218	206	\$553	\$28,749
52	Finance and Insurance	1,016	22,241	22,604	22,340	22,397	22,414	\$1,804	\$93,813
521	Monetary authorities - central bank
522	Credit intermediation and related activities	388	5,996	6,075	5,993	5,864	6,007	\$1,275	\$66,311
523	Securities, commodity contracts, investments	223	3,568	3,679	3,714	3,743	3,670	\$3,045	\$158,357
524	Insurance carriers and related activities	389	12,489	12,676	12,478	12,638	12,564	\$1,698	\$88,272
525	Funds, trusts, and other financial vehicles
53	Real Estate and Rental and Leasing	613	5,983	6,665	6,284	6,381	6,226	\$1,501	\$78,059
531	Real estate	482	3,829	4,001	3,968	3,974	3,934	\$1,373	\$71,404
532	Rental and leasing services
533	Lessors of nonfinancial intangible assets
54	Professional and Technical Services	2,897	30,185	30,991	31,124	31,950	30,905	\$1,701	\$88,451
541	Professional and technical services	2,897	30,185	30,991	31,124	31,950	30,905	\$1,701	\$88,451
55	Management of Companies and Enterprises	65	7,466	7,290	7,333	7,230	7,338	\$2,610	\$135,714
551	Management of companies and enterprises	65	7,466	7,290	7,333	7,230	7,338	\$2,610	\$135,714
56	Administrative and Waste Services	1,232	21,426	23,056	23,053	22,503	22,326	\$776	\$40,349
561	Administrative and support services	1,189	20,726	22,320	22,269	21,757	21,596	\$763	\$39,679
562	Waste management and remediation services	43	700	736	784	746	729	\$1,158	\$60,197
61	Educational Services	238	4,724	4,480	4,399	5,036	4,642	\$738	\$38,394
611	Educational services	238	4,724	4,480	4,399	5,036	4,642	\$738	\$38,394
62	Health Care and Social Assistance	1,524	27,307	27,867	27,556	28,041	27,484	\$927	\$48,214
621	Ambulatory health care services	1,182	8,992	9,159	9,104	9,197	9,071	\$1,258	\$65,424
622	Hospitals
623	Nursing and residential care facilities	92	4,736	4,853	4,778	4,934	4,782	\$567	\$29,499
624	Social assistance
71	Arts, Entertainment, and Recreation	250	2,446	3,430	2,982	2,713	2,931	\$431	\$22,405
711	Performing arts and spectator sports	68	259	255	255	323	268	\$862	\$44,816
712	Museums, historical sites, zoos, and parks	11	94	101	90	101	99	\$537	\$27,911
713	Amusements, gambling, and recreation	171	2,093	3,074	2,637	2,289	2,563	\$382	\$19,849
72	Accommodation and Food Services	1,206	15,544	16,421	15,799	15,937	15,790	\$430	\$22,362
721	Accommodation	67	2,523	2,729	2,751	2,666	2,708	\$760	\$39,518
722	Food services and drinking places	1,139	13,021	13,692	13,048	13,271	13,082	\$362	\$18,811
81	Other Services, Except Public Administration	1,642	8,924	9,460	9,015	9,270	9,071	\$761	\$39,567
811	Repair and maintenance
812	Personal and laundry services	582	2,932	3,070	3,028	3,142	3,018	\$431	\$22,387
813	Membership associations and organizations
814	Private households
99	Unclassified Entities
999	Unclassified entities
	PRIVATE SECTOR TOTAL	17,643	254,255	262,651	258,611	263,361	258,310	\$1,224	\$63,635

Public Sector Employers

EMPLOYER TYPE	Average Units	Employment				Wages		
		March	June	Sept	Dec	Average Annual	Average Weekly	Average Annual
FEDERAL	79	5,056	5,227	5,100	7,685	5,790	\$1,468	\$76,329
STATE	34	2,558	2,568	2,522	2,462	2,524	\$1,080	\$56,151
LOCAL	222	23,994	24,398	22,892	24,342	22,582	\$973	\$50,604
PUBLIC SECTOR TOTAL	335	31,608	32,193	30,514	34,489	30,896		
TOTAL ALL EMPLOYERS	17,977	285,863	294,844	289,125	297,850	289,207	\$1,208	\$62,807

SOURCE: N.J. Department of Labor and Workforce Development

NOTE: Data for industries with few units or where one employer is a significant percentage of employment or wages of the industry have been suppressed and are indicated (.).

Morris County Employment And Wages Covered By Unemployment Insurance Third Quarter 2007

NAICS Sector	Industry Description	Employment				Total	Wages	
		Units	July	August	September		Average per Employee	
							Quarterly	Weekly
11	Agriculture, forestry, fishing and hunting	45	365	345	365	\$2,711,603	\$7,567	\$582
21	Mining
22	Utilities
23	Construction	1,966	13,840	13,843	13,582	\$203,791,383	\$14,816	\$1,140
31-33	Manufacturing	677	25,474	25,643	25,549	\$488,027,960	\$19,097	\$1,469
42	Wholesale trade	1,294	18,424	18,404	18,302	\$363,617,904	\$19,787	\$1,522
44-45	Retail trade	2,017	30,083	29,897	29,534	\$255,230,499	\$8,554	\$658
48-49	Transportation and warehousing	356	8,514	8,408	8,824	\$104,272,882	\$12,150	\$935
51	Information	307	10,013	9,994	9,914	\$199,510,379	\$20,004	\$1,539
52	Finance and insurance	1,042	21,137	20,896	20,539	\$443,808,819	\$21,278	\$1,637
53	Real estate and rental and leasing	632	6,122	6,141	5,936	\$111,887,346	\$18,444	\$1,419
54	Professional and technical services	2,933	30,388	30,239	29,747	\$663,810,052	\$22,035	\$1,695
55	Management of companies and enterprises	87	7,289	7,299	7,245	\$203,714,185	\$27,992	\$2,153
56	Administrative and waste services	1,274	23,430	23,424	23,496	\$222,999,046	\$9,510	\$732
61	Educational services	268	4,818	4,777	4,731	\$47,491,589	\$9,945	\$765
62	Health care and social assistance	1,549	27,998	27,696	27,816	\$343,281,422	\$12,332	\$949
71	Arts, entertainment, and recreation	256	4,150	3,670	3,056	\$22,309,575	\$6,154	\$473
72	Accommodation and food services	1,209	16,716	16,630	17,082	\$90,869,656	\$5,406	\$416
81	Other services, except public administration	1,712	9,610	9,527	9,216	\$80,552,996	\$8,523	\$656
99	Unclassified entities	146	178	185	189	\$2,076,973	\$11,288	\$868
	PRIVATE SECTOR TOTAL	17,800	259,194	257,658	255,760	\$3,862,531,984	\$14,998	\$1,154

SOURCE: N.J. Department of Labor and Workforce Development

NOTE: Data for industries with few units or for industries where one employer makes up a significant portion of industry employment have been suppressed.

The weekly wage should be interpreted with caution. The weekly wage is derived by dividing the quarterly wage by 13.

Some quarters may have more or fewer pay periods than others.

Annual Average Labor Force Estimates, 2007

Municipality	Labor Force	Employment	Unemployment	Unemployment Rate
Boonton	5,199	4,900	298	5.7%
Boonton Twp.	2,416	2,336	80	3.3%
Butler	4,525	4,398	126	2.8%
Chatham Boro.	4,578	4,475	103	2.3%
Chatham Twp.	5,439	5,370	69	1.3%
Chester Boro.	897	862	34	3.8%
Chester Twp.	3,791	3,711	80	2.1%
Denville	8,776	8,535	241	2.7%
Dover	10,418	9,615	803	7.7%
East Hanover	6,482	6,276	207	3.2%
Florham Park	4,710	4,595	115	2.4%
Hanover	7,559	7,432	126	1.7%
Harding	1,497	1,462	34	2.3%
Jefferson	12,023	11,656	367	3.1%
Kinnelon	5,091	4,988	103	2.0%
Lincoln Park	6,559	6,352	207	3.1%
Long Hill	4,973	4,835	138	2.8%
Madison	8,052	7,880	172	2.1%
Mendham Boro.	2,479	2,445	34	1.4%
Mendham Twp.	2,566	2,543	23	0.9%
Mine Hill	2,067	1,986	80	3.9%
Montville	12,431	12,213	218	1.8%
Morris Twp.	12,198	11,831	367	3.0%
Morris Plains	2,996	2,892	103	3.4%
Morristown	11,554	11,198	356	3.1%
Mountain Lakes	1,976	1,965	11	0.6%
Mount Arlington	2,984	2,892	92	3.1%
Mount Olive	15,090	14,571	519	3.4%
Netcong	1,552	1,506	46	3.0%
Parsippany	30,891	30,056	835	2.7%
Pequannock	7,905	7,618	287	3.6%
Randolph	14,164	13,784	380	2.7%
Riverdale	1,586	1,517	69	4.3%
Rockaway Boro.	4,048	3,853	195	4.8%
Rockaway Twp.	14,629	14,295	334	2.3%
Roxbury	14,187	13,774	413	2.9%
Victory Gardens	908	873	34	3.8%
Washington	9,858	9,572	287	2.9%
Wharton	3,690	3,438	252	6.8%
Morris County	272,718	264,477	8,241	3.0%

SOURCE: N.J. Department of Labor and Workforce Development

NOTE: U.S. Bureau of Labor Statistics areas (with 25,000 + population) are based on claims-share. All others used census share.

Top Employers in Morris County, 2008

Employer	Full Time Employees
Novartis	*5,000
Atlantic Health	4,045
Picatinny Arsenal	3,309
St. Clare's Health System	*2,250
Morris County	2,184
ADP	*1,986
Lucent	1,983
United Parcel Service	1,941
AT&T	*1,500
Avis Budget Group	1,378
Wyndham Worldwide	1,371
Greystone Psych.	1,296
Accenture	1,200
Honeywell	1,200
PricewaterhouseCoopers	1,200
Realogy Corporation	*1,200
Tiffany & Co.	1,200
Kraft Foods	1,100
BASF	1,099
Deloitte & Touche	1,050
Wyeth	960
Johnson & Johnson	930
Howmet, An Alcoa business	900
State Farm Insurance	826
Chilton Memorial	822

SOURCE: Morris County Economic Development Corporation - August 2008 Survey

*** 2007 Employee Count**

Notes and Corrections (Continued)

Corrected Census 1990 Population and Housing Units

Area Name	Original Tabulation Counts		Corrected Count		Change	
	Total Housing Units	Total Population*	Total Housing Units	Total Population*	Total Housing Units	Total Population*
Washington Twp. (Morris)	5,125	15,592	5,128	15,600	3	8
Essex County	298,710	778,206	298,621	777,964	-89	-242
Hunterdon County	39,987	107,776	39,997	107,802	10	26
Middlesex County	250,174	671,780	250,182	671,811	8	31
Monmouth County	218,408	553,124	218,400	553,093	-8	-31
Morris County	155,745	421,353	155,748	421,361	3	8
Passaic County	162,512	453,060	162,601	453,302	89	242
Somerset County	92,653	240,279	92,640	240,245	-13	-34

Corrected Census 1980 Population and Housing Units

Area Name	Original Tabulation Counts		Corrected Count		Change	
	Total Housing Units	Total Population*	Total Housing Units	Total Population*	Total Housing Units	Total Population*
Essex County	317,230	851,116	317,329	851,304	99	188
New Jersey	2,772,149	7,364,823	2,772,248	7,365,011	99	188

Corrected Census 1970 Population and Housing Units

Area Name	Original Tabulation Counts		Corrected Count		Change	
	Total Housing Units	Total Population*	Total Housing Units	Total Population*	Total Housing Units	Total Population*
Bergen County	283,692	898,012	283,311	897,148	-381	-864
Essex County	311,615	929,986	312,479	932,526	864	2,540
Hudson County	214,749	609,266	214,338	607,839	-411	-1,427
Mercer County	96,430	303,968	96,430	304,116	0	148
Monmouth County	149,920	459,379	150,469	461,849	549	2,470
Warren County	24,907	73,879	24,964	73,960	57	81
New Jersey	2,388,011	7,168,164	2,388,689	7,171,112	678	2,948

*Population counts include population from housing units and group quarters, where applicable.

NOTE: Corrected 1970 New Jersey housing unit count is unofficial.

SOURCE: U.S. Census Bureau