

School Enrollment, 2007-2008 School Year by School District

District	Pre-K	K	1	2	3	4	5	6	7	8	Total Pre-K-8	9	10	11	12	Total HS	Spec. Ed. Pre-K-12	Grand Total
Boonton		47	77	60	64	77	61	75	79	78	618	130	137	147.5	159	573.5	55.5	1,247
Boonton Twp.		47	55	58	51	61	51	66	62	63	514					0	7	521
Butler		64	86	54	74	67	63	56	84	77	625	151	143	118.5	130	542.5	52	1,219.5
School Dist. of Chatham		275	288	281	329	295	291	267	258	295	2,579	247	253	219	235	954	49	3,582
Chester Twp.		146	131	144	158	172	161	152	191	155	1,410					0	19	1,429
Denville		177	197	228	231	221	203	209	238	207	1,911					0	69	1,980
Dover	76	233	254	224	180	188	175	205	255	237	2,027	279	229.5	147	187.5	843	53.5	2,923.5
East Hanover		99	124	113	128	136	129	131	134	117	1,111					0	16	1,127
Educ. Serv. Comm. Morris Co.											0					0	145	145
Florham Park		122	103	105	118	119	124	117	91	101	1,000					0	25	1,025
Hanover Park Regional											0	341	386	375	386	1,488	12	1,500
Hanover		157	162	183	188	177	179	172	175	150	1,543					0	32	1,575
Harding		19	38.5	37	27	50	35	49	25	40	320.5					0		320.5
Jefferson		252	258	265	266	260	229	266	262	249	2,307	250	271	261	251	1,033	274	3,614
Kinnelon		147	144	160	160	163	188	199	172	175	1,508	167	172	157.5	157.5	654	36	2,198
Lincoln Park	10	89	109	86	88	96	99	109	116	107	909					0	5	914
Long Hill	17	93	104	117	112	121	116	142	122	116	1,060					0	3	1,063
Madison		109	168	157	158	175	168	169	157	190	1,451	200	176	204.5	179.5	760	35	2,246
Mendham Boro.	9	71	72	61	76	77	79	71	74	78	668					0		668
Mendham Twp.		74	76	100	104	96	122	117	118	93	900					0	10	910
Mine Hill		83	39	56	56	45	51	34			364					0		364
Montville		292	309	320	313	311	326	348	332	350	2,901	331	327	294	306.5	1,259	95	4,254.5
Morris Co. Vocational											0	174	122	177	162	635		635
Morris Hills Regional											0	669	665	657	662.5	2,654	55	2,708.5
Morris Plains		73	80	83	58	65	55	59	69	62	604					0	10	614
Morris School District	81	377	385	339	362	323	297	281	299	310	3,054	377	391	355	347	1,470	148	4,672
Mount Arlington		41	43	42	34	40	46	39	47	47	379					0	11	390
Mount Olive		332	401	367	356	371	363	380	381	391	3,342	362	334	343.5	307.5	1,347	215	4,904
Mountain Lakes		62	73	70	96	75	96	96	94	104	766	162	171	163.5	171	668	172	1,605.5
Netcong	28	26	32	16	35	26	27	30	34	36	290					0	6	296
Parsippany-Troy Hills	19	507	516	495	533	492	522	555	537	544	4,720	542	514	549	561	2,166	324	7,210
Pequannock		148	177	164	165	187	205	179	171	190	1,586	211	185	178.5	203	777.5	73.5	2,437
Randolph	22	348	402	416	386	412	400	412	449	433	3,680	429	441	462.5	429.5	1,762	128	5,570
Riverdale	15	31	20	28	28	30	29	29	31	40	281					0	1	282
Rockaway Boro.	8	66	79	64	76	67	63	75	72	70	640					0		640
Rockaway Twp.		230	265	298	292	281	307	295	308	322	2,598					0	146	2,744
Roxbury		215	289	316	296	311	289	298	333	323	2,670	433	400	377	343	1,553	192	4,415
Unity Charter School		9	10	11	13	12	14	9	7	13	98					0		98
Washington		247	297	296	320	316	314	345	342	342	2,819					0	43.5	2,862.5
West Morris Regional											0	688	630	672.5	622.5	2,613	8	2,621
Wharton	71	76	61	63	74	67	69	80	83	94	738					0	53	791
Morris County	356	5,384	5,924.5	5,877	6,005	5,982	5,946	6,116	6,202	6,199	53,991.5	6,143	5,947.5	5,859.5	5,801	23,751	2,579	80,321.5

SOURCE: N.J. Department of Education

Racial Breakdown of Students by School District, Fall 2007

District	White	Black	Hispanic	Asian	Native American	Hawaiian Native	Two or More Races	Grand Total
Boonton	755	99	157.5	227	0	8.5	0	1,247
Boonton Twp.	472	5	22	19	0	1	2	521
Butler	1,071.5	19	90	36	1	2	0	1,219.5
School Dist. of Chatham	3,211.5	31.5	97.5	235	3	3.5	0	3,582
Chester Twp.	1,284	13	71	61	0	0	0	1,429
Denville	1,680	56	86	156	2	0	0	1,980
Dover	357	199.5	2,312	55	0	0	0	2,923.5
East Hanover	942	20	44	119	0	2	0	1,127
Educ. Serv. Comm. Morris Co.	111	15	12	7	0	0	0	145
Florham Park	882	43	32	64	0	0	4	1,025
Hanover Park Regional	1,260	32	62	144	0	2	0	1,500
Hanover	1,295	16	47	217	0	0	0	1,575
Harding	296.5	5	9	0	0	10	0	320.5
Jefferson	3,136	64.5	236.5	168	5	4	0	3,614
Kinnelon	2,054	14	45	68	2	15	0	2,198
Lincoln Park	712	14	95	51	1	41	0	914
Long Hill	899	7	69	78	0	0	10	1,063
Madison	1,791	70	210	171	3	0	1	2,246
Mendham Boro.	632	0	17	18	1	0	0	668
Mendham Twp.	856	8	15	28	3	0	0	910
Mine Hill	218	31	90	25	0	0	0	364
Montville	3,179	85	126.5	845	14	5	0	4,254.5
Morris Co. Vocational	462.5	22.5	90	60	0	0	0	635
Morris Hills Regional	2015	79.5	429.5	166.5	8	10	0	2,708.5
Morris Plains	537	8	37	30	0	0	2	614
Morris School District	2,620.5	698.5	1,104	237	9	3	0	4,672
Mount Arlington	308	11	47	16	0	0	8	390
Mount Olive	3,666	293	500.5	434.5	1	4	5	4,904
Mountain Lakes	1,393	27.5	62	122	0	0	1	1,605.5
Netcong	201	6	79	6	4	0	0	296
Parsippany-Troy Hills	3,904	272	636	2,368	5	3	22	7,210
Pequannock	2,311.5	7	82.5	31	1	4	0	2,437
Randolph	4,536	145	429	450	1	7	2	5,570
Riverdale	245	1	21	15	0	0	0	282
Rockaway Boro.	436	21	122	61	0	0	0	640
Rockaway Twp.	2,059	108	332	237	7	1	0	2,744
Roxbury	3,598	160	392.5	262.5	2	0	0	4,415
Unity Charter School	68	10	19	1	0	0	0	98
Washington	2,608	52	98	105	0	0	0	2,862.5
West Morris Regional	2,424	24	80.5	79	8	1	5	2,621
Wharton	307	34	401	49	0	0	0	791
Morris County	60,793	2,827.5	8,908.5	7,522.5	81	127	62	80,321.5

SOURCE: N.J. Department of Education

Fall School Enrollments by School District, 2002 - 2007

District	2002	2003	2004	2005	2006	2007
Boonton	1,296.5	1,321	1,295.5	1,312	1,273	1,247
Boonton Twp.	548	540	506	520	525	521
Butler	1,170	1,142	1,161.5	1,147	1,189	1,219.5
School Dist. of Chathams	2,991	3,135	3,255.5	3,358	3,489.5	3,582
Chester Twp.	1,228	1,275	1,332	1,377	1,388	1,429
Denville	1,821	1,900	1,927	1,928	1,945	1,980
Dover	2,911.5	3,046.5	3,042	2,948	2,876	2,923.5
East Hanover	1,096	1,125	1,134	1,130	1,147	1,127
Educ. Serv. Comm. Morris Co.	143	135.5	139	134	136.5	145
Florham Park	921	947	982	993	970	1,025
Hanover Park Regional	1,345	1,433	1,481.5	1,508	1,507	1,500
Hanover	1,370	1,458	1,520	1,552	1,553	1,575
Harding	329	336	334	321	317	320.5
Jefferson	3,533	3,584.5	3,601.5	3,621.5	3,635	3,614
Kinnelon	2,055.5	2,113.5	2,112	2,157	2,194	2,198
Lincoln Park	963	991	950	946	934	914
Long Hill	1,073	1,087	1,098	1,095	1,065	1,063
Madison	2,147	2,221	2,213.5	2,225	2,276.5	2,246
Mendham Boro.	640	672	672	650	729	668
Mendham Twp.	887	869	905	926	893	910
Mine Hill	396	384	371	369	355	364
Montville	3,811	3,953.5	3,990.5	4,120	4,182	4,254.5
Morris Co. Vocational	391	426.5	517.5	547	605	635
Morris Hills Regional	2,432.5	2,624	2,727	2,792	2,730	2,708.5
Morris Plains	561	570	580	598	617	614
Morris School District	4,618	4,650	4,622	4,627	4,648	4,672
Mount Arlington	456	440	434	415	405	390
Mount Olive	4,587.5	4,738.5	4,833.5	4,926	4,981	4,904
Mountain Lakes	1,665	1,651.5	1,710	1,631	1,747	1,605.5
Netcong	297	291	282	288	295	296
Parsippany-Troy Hills	6,734	6,916	7,061.5	7,104.5	7,169.5	7,210
Pequannock	2,453.5	2,487	2,506.5	2,502	2,478	2,437
Randolph	5,443.5	5,465	5,494.5	5,544	5,535	5,570
Riverdale	273	277	271	266	266	282
Rockaway Boro.	590	602	621	611	622	640
Rockaway Twp.	2,873	2,865	2,813	2,844	2,854	2,744
Roxbury	4,528	4,635	4,533	4,475.5	4,499	4,415
Unity Charter School	96	105	105	97	102	98
Washington	2,845	2,939	2,940	2,919	2,913	2,862.5
West Morris Regional	2,301	2,381.5	2,471.5	2,519.5	2,525	2,621
Wharton	846	802	796	780	746	791
Morris County	76,666.5	78,535.5	79,342.5	79,824	80,317	80,321.5

SOURCE: N.J. Department of Education

Educational Attainment - Persons 25 Years of Age & Over, 2000

Municipality	Population 25 Years and Over	Less Than 9th Grade	9th to 12th Grade, No Diploma	High School Graduate	Some College, No Degree	Associate Degree	Bachelor's Degree	Graduate or Professional Degree
Boonton	6,081	392	452	1,630	1,307	300	1,429	571
Boonton Twp.	3,047	48	163	705	581	150	883	517
Butler	5,293	261	488	2,013	1,059	196	884	392
Chatham Boro.	5,723	83	114	704	717	290	2,195	1,620
Chatham Twp.	7,013	67	169	1,045	829	293	2,390	2,220
Chester Boro.	1,138	40	72	253	157	66	324	226
Chester Twp.	4,789	69	106	726	635	203	1,581	1,469
Denville	11,319	232	644	2,782	1,948	732	3,058	1,923
Dover	12,011	2,019	1,955	4,125	1,944	462	983	523
East Hanover	8,147	403	570	2,668	1,304	484	1,624	1,094
Florham Park	6,484	191	316	1,130	857	250	2,161	1,579
Hanover	9,272	422	548	2,521	1,482	454	2,431	1,414
Harding	2,265	16	41	339	316	58	773	722
Jefferson	13,398	347	1,046	4,402	2,962	913	2,772	956
Kinnelon	6,182	87	135	1,042	1,083	285	1,990	1,560
Lincoln Park	8,139	363	750	2,525	1,374	447	1,787	893
Long Hill	5,995	114	258	1,346	906	418	1,821	1,132
Madison	10,178	383	550	1,779	1,266	417	3,137	2,646
Mendham Boro.	3,489	26	138	510	458	187	1,199	971
Mendham Twp.	3,467	30	42	402	414	106	1,273	1,200
Mine Hill	2,626	59	180	862	607	177	499	242
Montville	14,445	269	670	2,903	2,444	757	4,454	2,948
Morris Twp.	15,565	293	467	2,159	2,077	673	5,287	4,609
Morris Plains	3,777	70	147	717	660	258	1,113	812
Morristown	13,604	1,040	1,266	3,252	2,120	585	3,160	2,181
Mountain Lakes	2,624	22	20	144	338	103	1,073	924
Mount Arlington	3,408	82	244	922	707	230	842	381
Mount Olive	15,764	378	904	4,095	3,495	1,142	3,979	1,771
Netcong	1,817	144	132	660	370	112	287	112
Parsippany	36,644	1,281	2,420	9,392	5,851	1,952	10,121	5,627
Pequannock	9,495	228	451	2,903	1,810	546	2,476	1,081
Randolph	16,253	215	487	2,659	2,175	1,057	5,478	4,182
Riverdale	1,724	37	150	611	313	81	388	144
Rockaway Boro.	4,552	154	315	1,561	909	306	959	348
Rockaway Twp.	15,488	348	742	3,917	2,973	1,100	4,484	1,924
Roxbury	16,150	529	1,084	4,664	3,255	1,137	3,872	1,609
Victory Gardens	984	86	208	331	203	56	88	12
Washington	11,313	202	216	2,088	2,057	728	3,760	2,262
Wharton	4,218	217	587	1,243	861	352	626	332
Morris County	323,881	11,247	19,247	77,730	54,824	18,063	87,641	55,129

SOURCE: U.S. Census Bureau, Census 2000

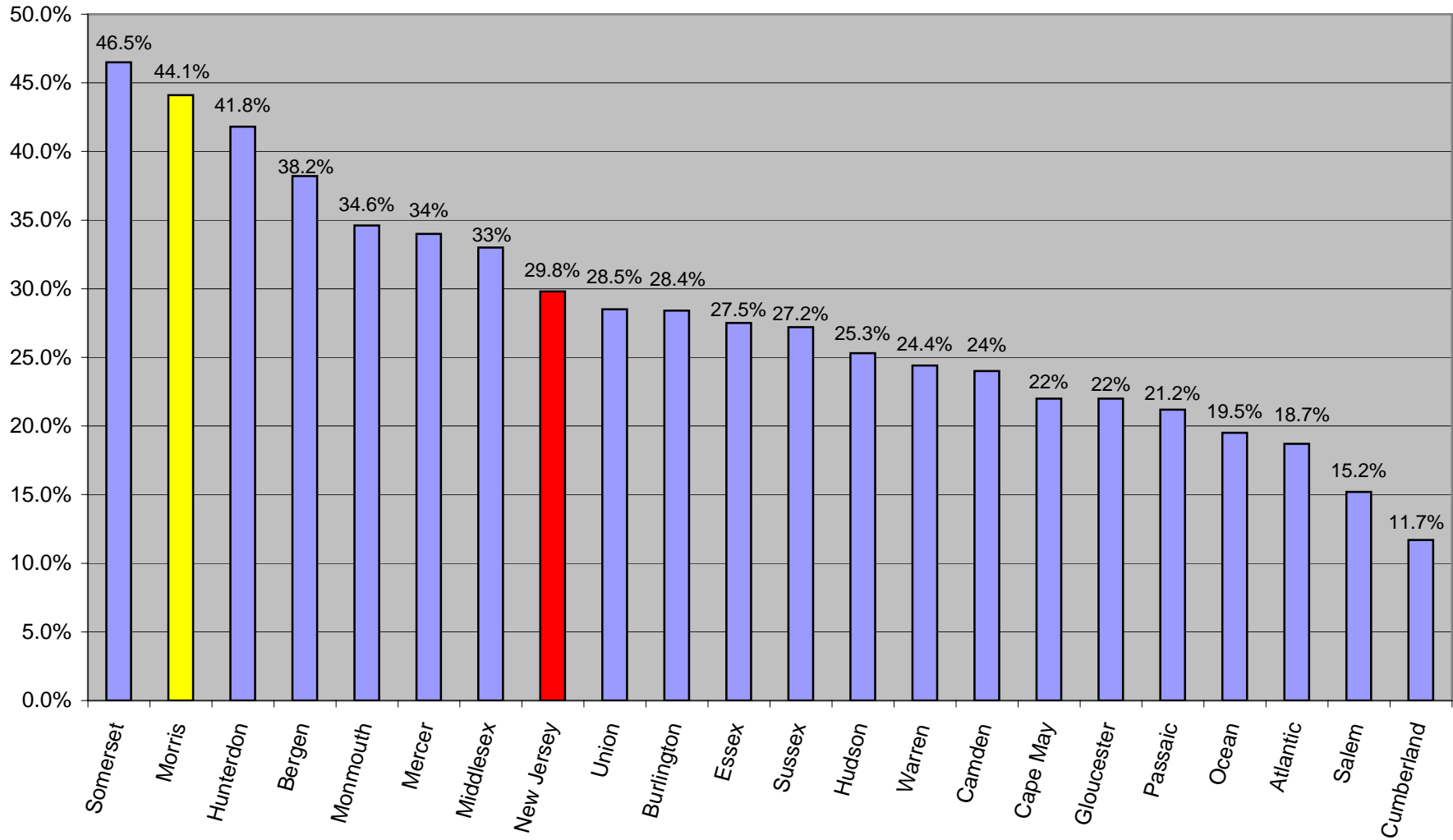
Educational Attainment - Persons 25 Years of Age & Over by County, 2000

County	Population 25 Years and Over	Less Than 9th Grade	9th to 12th Grade, No Diploma	High School Graduate	Some College, No Degree	Associate Degree	Bachelor's Degree	Graduate or Professional Degree	Percent High School Graduate or Higher	Percent Bachelor's Degree or Higher
Atlantic	168,546	11,016	25,793	58,369	32,668	9,191	21,655	9,854	78.2	18.7
Bergen	623,469	34,069	49,551	163,525	106,035	31,908	149,798	88,583	86.6	38.2
Burlington	285,553	9,564	27,095	88,884	59,300	19,642	54,721	26,347	87.2	28.4
Camden	331,765	19,501	45,956	106,572	61,683	18,351	51,782	27,920	80.3	24.0
Cape May	72,878	3,319	9,891	26,475	13,289	3,856	11,288	4,760	81.9	22.0
Cumberland	96,899	10,903	19,610	35,189	15,212	4,600	7,820	3,565	68.5	11.7
Essex	513,570	47,859	77,545	139,578	86,465	20,956	84,953	56,214	75.6	27.5
Gloucester	164,801	6,375	19,431	60,828	30,988	11,001	25,695	10,483	84.3	22.0
Hudson	408,799	55,229	65,254	109,542	61,316	14,102	66,835	36,521	70.5	25.3
Hunterdon	83,548	2,338	4,767	21,338	14,591	5,616	21,269	13,629	91.5	41.8
Mercer	231,139	13,598	28,407	59,141	39,094	12,393	42,680	35,826	81.8	34.0
Middlesex	501,552	31,015	47,449	145,657	84,865	27,033	102,750	62,783	84.4	33.0
Monmouth	413,058	15,421	34,473	113,343	80,586	26,393	90,050	52,792	87.9	34.6
Morris	323,881	11,247	19,247	77,730	54,824	18,063	87,641	55,129	90.6	44.1
Ocean	358,354	16,292	44,607	135,009	73,038	19,573	48,044	21,791	83.0	19.5
Passaic	316,401	37,347	47,063	98,830	52,856	13,228	44,793	22,284	73.3	21.2
Salem	42,789	3,017	5,777	16,784	7,805	2,894	4,808	1,704	79.4	15.2
Somerset	204,343	8,684	12,628	43,972	32,394	11,621	55,991	39,053	89.6	46.5
Sussex	95,094	2,773	6,952	31,740	21,321	6,427	17,640	8,241	89.8	27.2
Union	351,903	30,835	42,064	104,431	57,534	16,815	61,760	38,464	79.3	28.5
Warren	69,457	3,027	7,488	24,556	13,008	4,433	11,692	5,253	84.9	24.4
New Jersey	5,657,799	373,429	641,048	1,661,493	998,872	298,096	1,063,665	621,196	82.1	29.8

SOURCE: U.S. Census Bureau, Census 2000

Educational Attainment by County, 2000

Percent Bachelor's Degree or Higher



SOURCE: U.S. Census Bureau, Census 2000

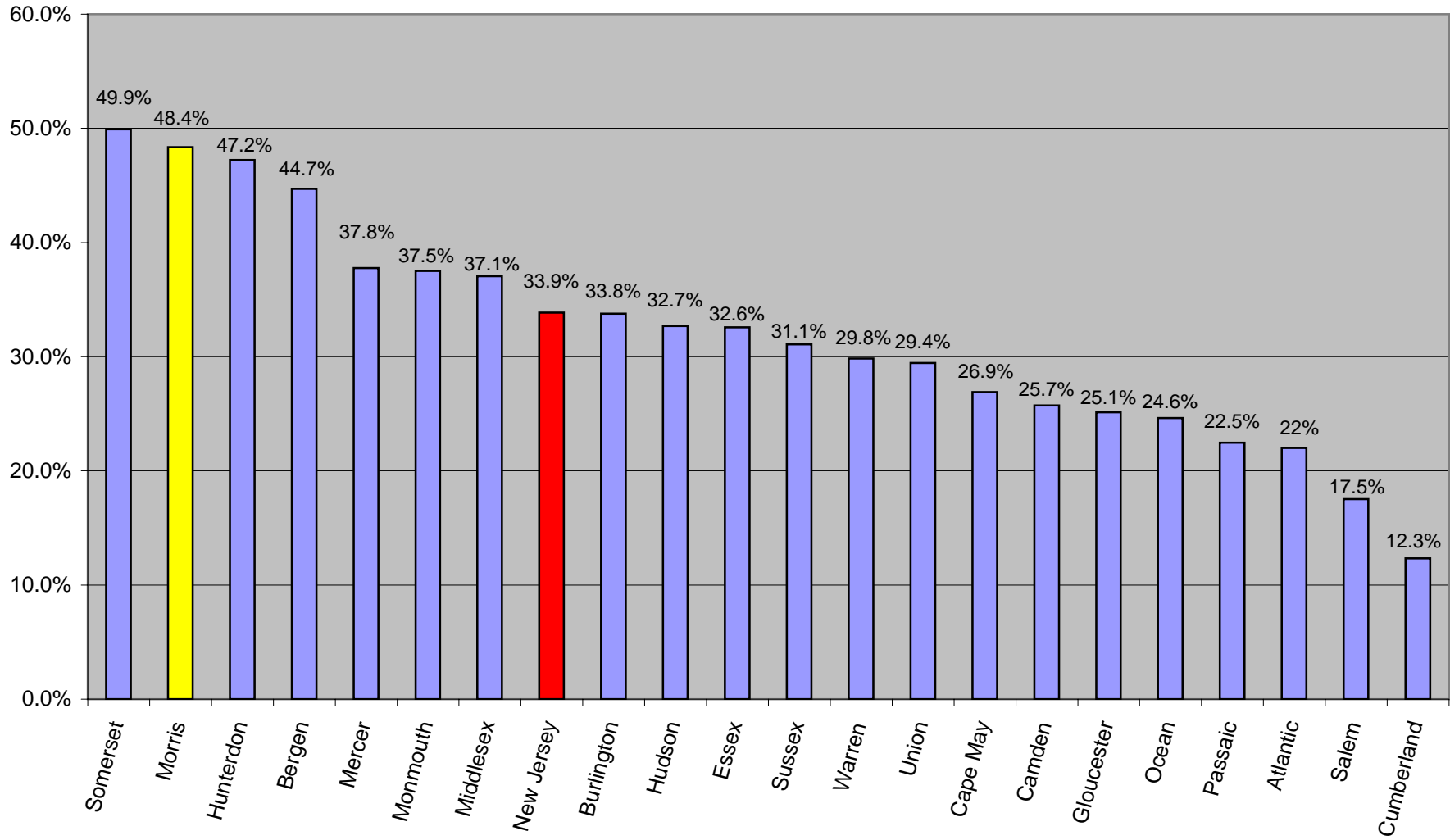
Educational Attainment - Persons 25 Years of Age & Over by County, 2007

County	Population 25 Years and Over	Less Than 9th Grade	9th to 12th Grade, No Diploma	High School Graduate	Some College, No Degree	Associate Degree	Bachelor's Degree	Graduate or Professional Degree	Percent High School Graduate or Higher	Percent Bachelor's Degree or Higher
Atlantic	181,602	11,566	17,107	66,751	34,831	11,400	28,718	11,229	84.2	22.0
Bergen	626,148	24,649	30,483	165,096	91,150	34,806	172,987	106,977	91.2	44.7
Burlington	304,787	8,529	19,457	92,818	58,135	22,908	65,928	37,012	90.8	33.8
Camden	338,088	19,296	34,173	118,828	58,508	20,323	55,597	31,363	84.2	25.7
Cape May	70,072	2,041	7,899	24,783	11,436	5,059	12,406	6,448	85.8	26.9
Cumberland	103,986	8,904	19,212	41,257	15,247	6,538	8,427	4,401	73.0	12.3
Essex	504,432	47,495	50,809	146,218	70,508	25,106	96,654	67,642	80.5	32.6
Gloucester	188,358	6,611	16,103	70,937	34,181	13,171	34,246	13,109	87.9	25.1
Hudson	412,225	44,572	39,775	118,440	58,883	15,851	90,598	44,106	79.5	32.7
Hunterdon	89,911	2,043	4,271	21,523	13,678	5,930	25,248	17,218	93.0	47.2
Mercer	240,790	13,009	17,521	65,747	38,368	15,187	48,206	42,752	87.3	37.8
Middlesex	529,801	29,690	32,879	156,686	81,086	33,115	116,594	79,751	88.2	37.1
Monmouth	431,022	15,588	24,469	125,327	71,945	31,969	100,346	61,378	90.7	37.5
Morris	332,824	10,283	13,419	82,562	46,260	19,345	100,149	60,806	92.9	48.4
Ocean	393,238	13,708	32,980	148,482	74,912	26,319	65,366	31,471	88.1	24.6
Passaic	317,919	28,405	26,631	119,704	52,587	19,180	50,200	21,212	82.7	22.5
Salem	45,054	2,551	4,736	17,093	8,841	3,939	5,116	2,778	83.8	17.5
Somerset	218,529	5,235	9,089	51,584	28,491	15,033	62,954	46,143	93.4	49.9
Sussex	101,744	1,859	4,963	37,987	17,754	7,563	21,808	9,810	93.3	31.1
Union	346,383	24,806	25,563	124,091	51,194	18,751	64,274	37,704	85.5	29.4
Warren	74,013	2,017	5,300	26,889	13,116	4,607	14,816	7,268	90.1	29.8
New Jersey	5,850,926	322,857	436,839	1,822,803	931,111	356,100	1,240,638	740,578	87.0	33.9

SOURCE: U.S. Census Bureau, 2007 American Community Survey

Educational Attainment by County, 2007

Percent Bachelor's Degree or Higher



SOURCE: U.S. Census Bureau, 2007 American Community Survey